



## D4-E KIT

### Hot Melt Handgun Kit

Valco Melton's D4-e Kit provides everything you need for fast and precise manual applications. This kit includes the D4-e Gear Pump Hot Melt Unit, one high-flex hose, and one AD-41 Manual Gun (bead or spray, including nozzles). This packaged solution is ideally suited for offline applications.

- Get a wide range of options to configure your own kit: spray or bead Gun with top or bottom feed, spray or bead nozzles, and various lengths of corrugated hoses
- Experience a cost-effective solution for accurate manual applications
- Simplify maintenance with reliable operation and with Teflon® coated tanks
- Deliver 27 kg/hour with a large capacity gear pump
- Optimize system performance with precise PID temperature controls
- This system features outlets capable of holding 2 hoses and 2 guns.



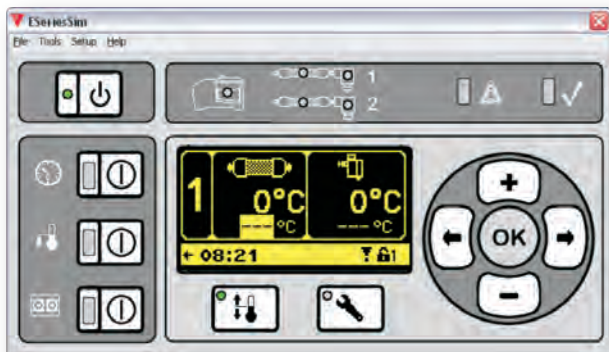
Efficient and clean operation featuring Teflon® coated tank



Guns are capable of bead extrusion or swirl spray and include both a top and bottom feed.

Hot melt hoses for your demanding handgun applications.





D4-e units feature an easy-to-use touch pad with a bright LCD screen which allows operators to quickly setup system parameters and monitor system operation with a user-friendly interface.

- Graphical display/ interface
- Programmable sequential zone start-up
- Automatic temperature setback
- High/low temperature protection
- Fahrenheit or Celsius option
- System diagnostics
- Seven-day programmable clock
- Two user selectable inputs and one selectable output
- Password protection for setup configuration

## Technical Specifications

**ISO 9001**

QUALITY SYSTEMS

D4-e Characteristics		Hot Melt Hose Characteristics	
Tank Capacity	4.0 Kg	Max. Working Temperature	220°C
Melt Rate	5.0 Kg/hr	Internal Diameter (mm)	Ø8
Motor	1/4 HP Fixed Speed AC	Max. Working Pressure	100 bar
Pump Rate	27 Kg/hr	Power Consumption	150 W/m
Temp. Range	30-230°C	RTD	NI-120
Temp. Stability	0.5°C	Minimum Curvature Radius (180°)	160 mm
Electrical	110/120 VAC or 200/240 VAC 20 AMP single phase with ground	Voltage	200-240 VAC

AD-41 Manual Gun Characteristics	
Patterns	Extrusion and Swirl-Spray
Operating Temp.	400°F (200°C)
Air Pressure	0 to 51 psi
Electric Supply	120 or 240, VAC 50/60 Hz
Standard Extrusion	0.020 to 0.093
Nozzle Diameter	(0.5 to 2mm)



**VALCO MELTON**

For more information, visit <http://hub.am/IFYCEF> or contact your local Valco Melton representative.

World Headquarters: USA, Cincinnati, Ohio (Corporate Offices) • Tel:+1.513.874.6550 • Fax: +1.513.874.3612

Europe Headquarters: Spain, Navarra • Tel:+34.948.321.580 • Fax:+34.948.326.584

Asia Headquarters: China, Xiamen, Fujian • Tel:+86.592.591.7854 • Fax:+86.592.591.7834

info@valcomelton.com • Serving over 76 Countries Worldwide • valcomelton.com